

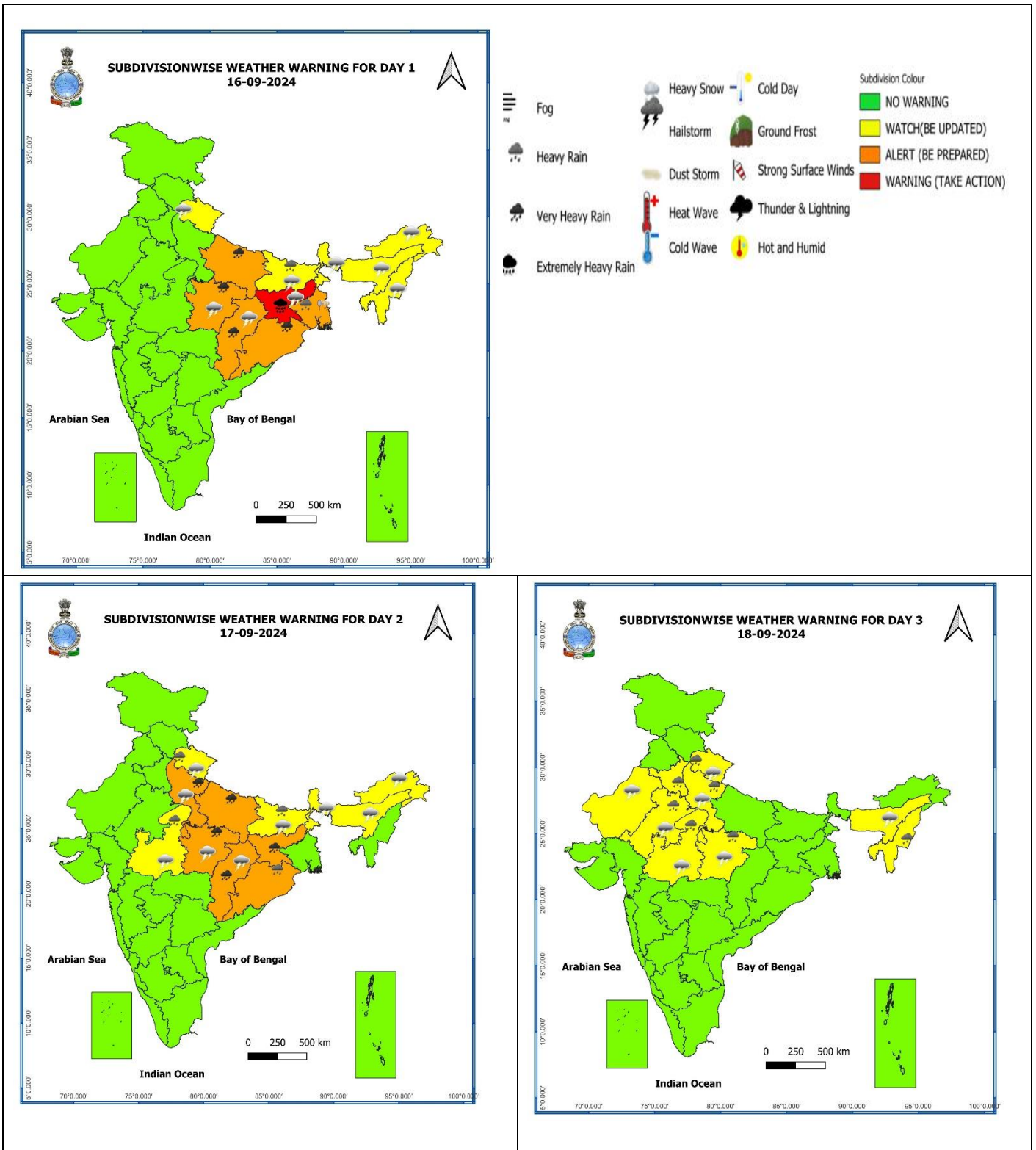
Heavy Rainfall Warning Based on 0300 UTC of 16th September, 2024

- **Jharkhand:** Light to moderate rainfall at most places with **heavy to very heavy rainfall** at a few places & **isolated extremely heavy rainfall** over south Jharkhand & **isolated heavy to very heavy rainfall** over North Jharkhand on 16th September. Light to moderate rainfall at most places with **heavy to very heavy rainfall** at isolated places over Jharkhand on 17th September.
- **Gangetic West Bengal:** Light to moderate rainfall at most places is very likely with **heavy rainfall** at isolated places over Gangetic West Bengal on 16th September.
- **Odisha:** Light to moderate rainfall at most places is very likely with **heavy to very heavy rainfall** at isolated places over North Odisha on 16th September and **heavy rainfall** at isolated places over Northwest Odisha on 17th September.
- **Bihar:** Light to moderate rainfall at most places with **heavy rainfall** at isolated places is very likely over South Bihar on 16th and 17th September.
- **Chhattisgarh:** Light to moderate rainfall at most places with **heavy to very heavy rainfall** at isolated places over North Chhattisgarh during 16th to 17th September.
- **Madhya Pradesh:** Light to moderate rainfall at most places with **heavy to very heavy rainfall** at isolated places is likely over Northeast Madhya Pradesh on 16th & 17th September and **heavy rainfall** at isolated places on 18th September. Light to moderate rainfall at most places with **heavy rainfall** at isolated places over Northwest Madhya Pradesh during 17th to 18th September.
- **Uttar Pradesh:** Light to moderate rainfall at many places with **heavy to very rainfall** at isolated places over Southeast Uttar Pradesh during 16th and 17th September. Light to moderate rainfall at many places with **heavy to very rainfall** at isolated places over West Uttar Pradesh on 17th and **heavy rainfall** at isolated places on 18th September.

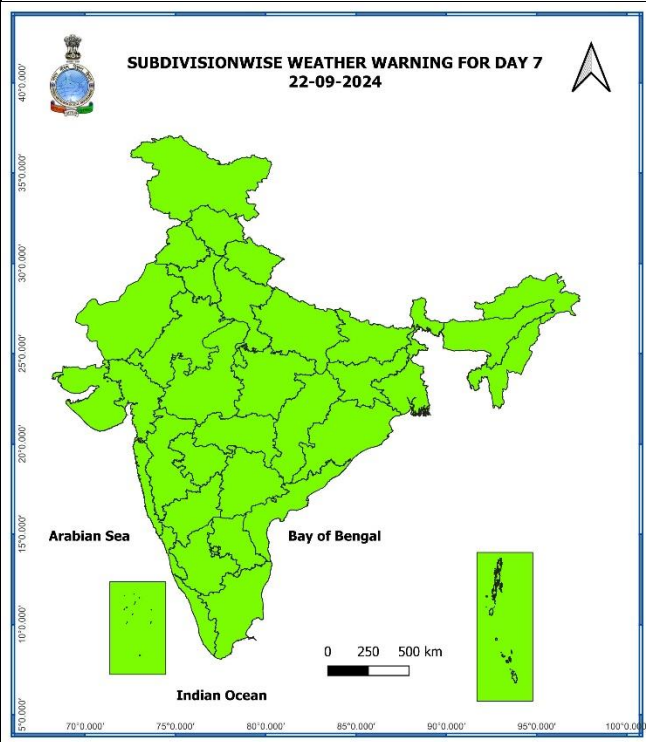
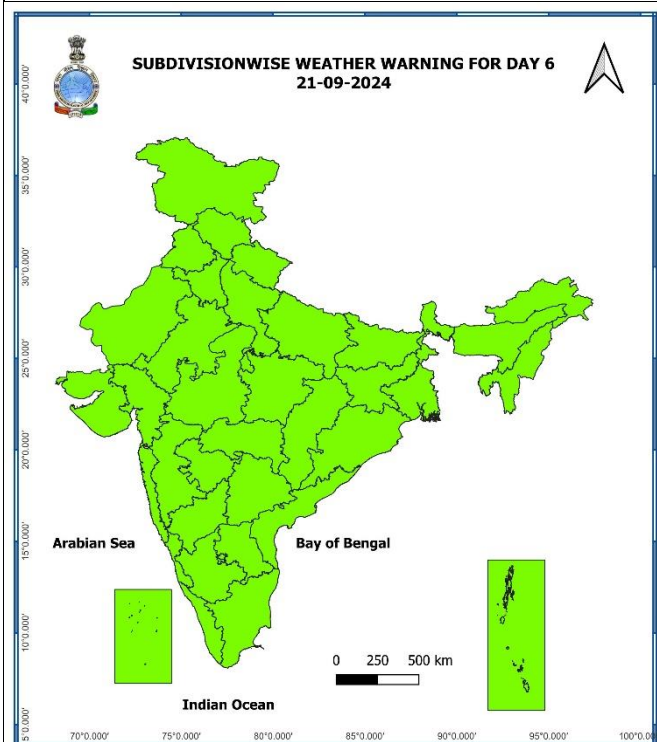
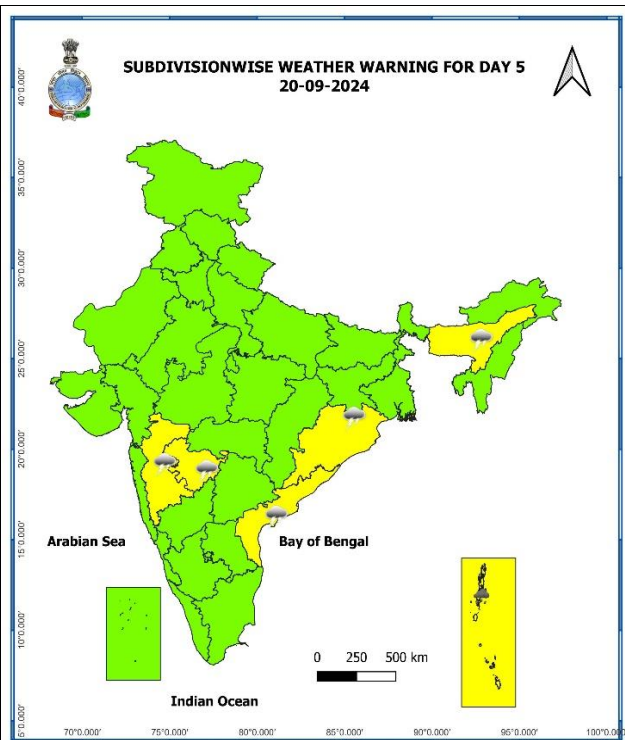
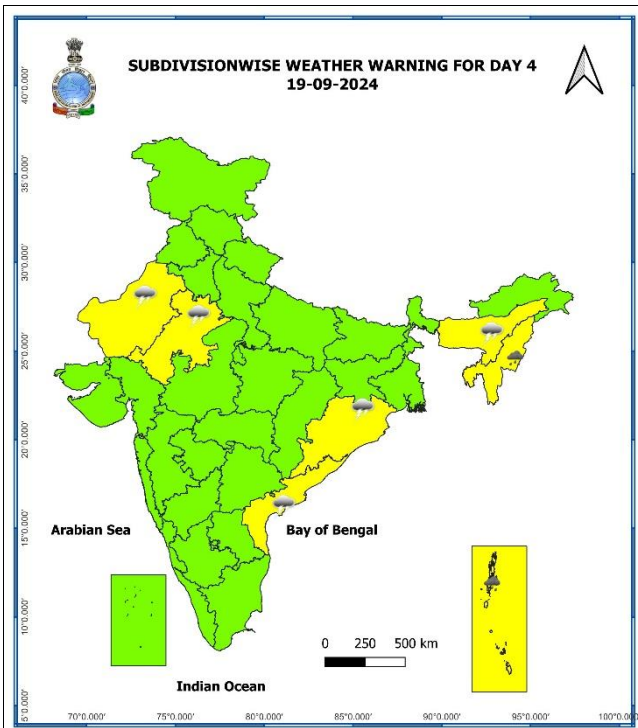
Spatial rainfall distribution: Isolated: <25%, A few: 26-50%, Many: 51-75%, Most: 76-100%

Rainfall amount (mm): Heavy rain: 64.5 – 115.5, Very heavy rain: 115.6 – 204.4, Extremely heavy rain: 204.5 or more.

Warning Graphics



Spatial rainfall distribution: Isolated: <25%, A few: 26-50%, Many: 51-75%, Most: 76-100%
Rainfall amount (mm): Heavy rain: 64.5 – 115.5, Very heavy rain: 115.6 – 204.4, Extremely heavy rain: 204.5 or more.

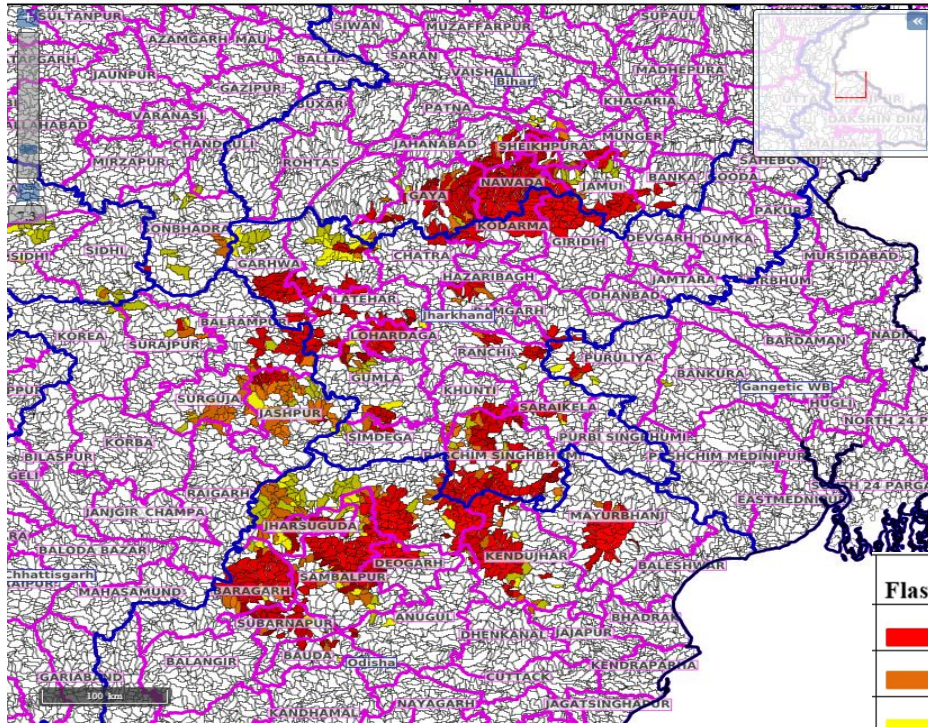


- Action may be taken based on **ORANGE AND RED COLOUR** warnings.
- Vulnerable regions likely urban and hilly areas action may be initiated for heavy rainfall warning.
- As the lead period increases forecast accuracy decreases.

Spatial rainfall distribution: Isolated: <25%, A few: 26-50%, Many: 51-75%, Most: 76-100%
Rainfall amount (mm): Heavy rain: 64.5 – 115.5, Very heavy rain: 115.6 – 204.4, Extremely heavy rain: 204.5 or more.

Flash Flood Guidance

Product: GFS FFR | Timescale: 24-hr | Region: "INDIA"
 Product Date: 2024-09-16 00:00 UTC | Valid Date: 2024-09-17 00:00 UTC



Flash Flood Risk	
	High Risk (Take Action)
	Moderate Risk (Be Prepared)
	Low Risk (Be Updated)

24 hours Outlook for the Flash Flood Risk (FFR) till 0530 IST of 17-09-2024 :

Low to Moderate flash flood risk likely over few watersheds & neighbourhoods of following Met Sub-divisions during next 24 hours.

Odisha - Keonjhar, Mayurbhanj, Deogarh, Baragarh, Jharsuguda, Subarnpur, Sambalpur and Sundargarh districts.

Chhattisgarh - Balarampur, Jashpur, Korea, Surajpur and Surguja districts.

Jharkhand - Bokaro, Chatra, Deoghar, Dhanbad, Dumka, East & West Singhbhum, Garhwa, Giridih, Godda, Gumla, Hazaribagh, Jamtara, Khunti, Koderma, Latehar, Lohardaga, Pakur, Palamu, Ramgarh, Ranchi, Sahebganj, and Saraikela districts.

Surface runoff/ Inundation may occur at some fully saturated soils & low-lying areas over AoC as shown in map due to expected rainfall occurrence in next 24 hours.

Spatial rainfall distribution: Isolated: <25%, A few: 26-50%, Many: 51-75%, Most: 76-100%

Rainfall amount (mm): Heavy rain: 64.5 – 115.5, Very heavy rain: 115.6 – 204.4, Extremely heavy rain: 204.5 or more.